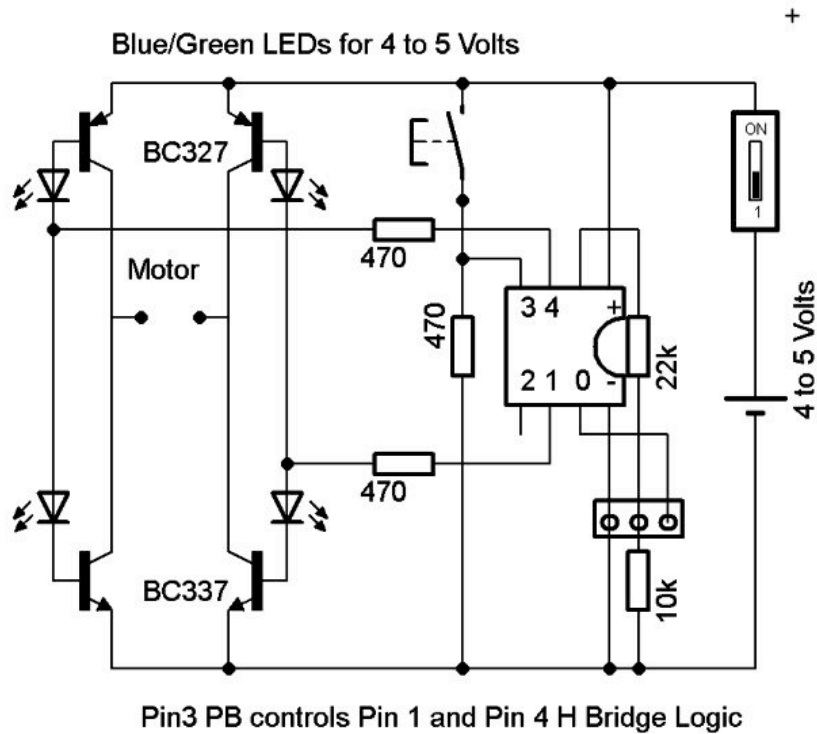
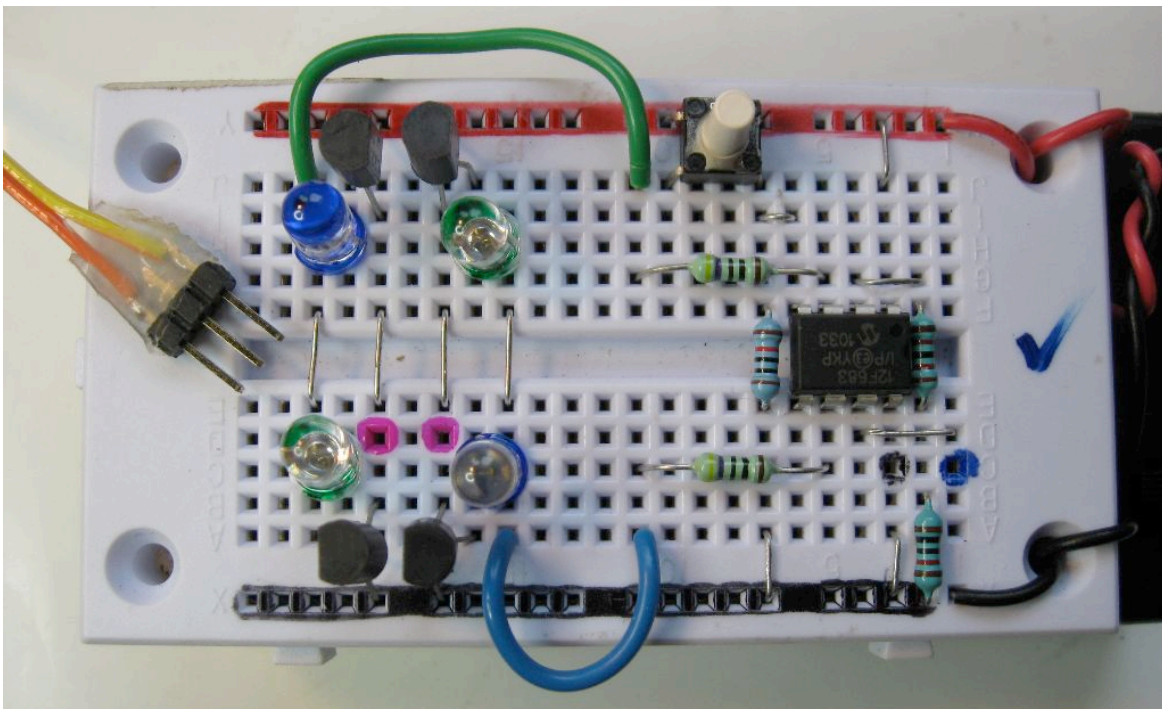


H Bridge – PB Control



- Each side of the H Bridge can be switched HIGH or LOW by making pin 1 or 4 High or Low.
- Each side of the H Bridge can be switched OFF completely (coast) using Input command
- Write a short program to make the PB control the two outputs to control the motor



- Refer to the Help Section PICAXE Manuals for programming ideas and circuits
- Motor speed can be controlled using the PWM command
- The 100nF capacitor MUST be a ceramic type and soldered DIRECTLY to the motor brushes. This is ESSENTIAL to prevent sparks and interference affecting the PICAXE

- A 1N4148 +ve in place of the picaxe +ve link and capacitor across the chip to stop noise from resetting the picaxe