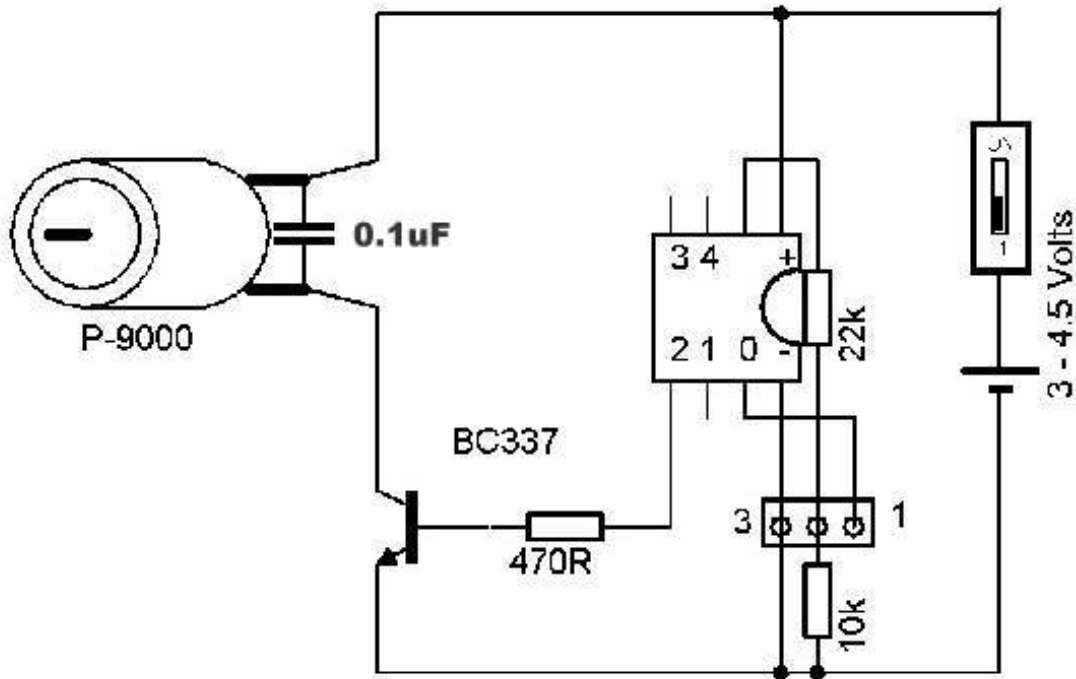
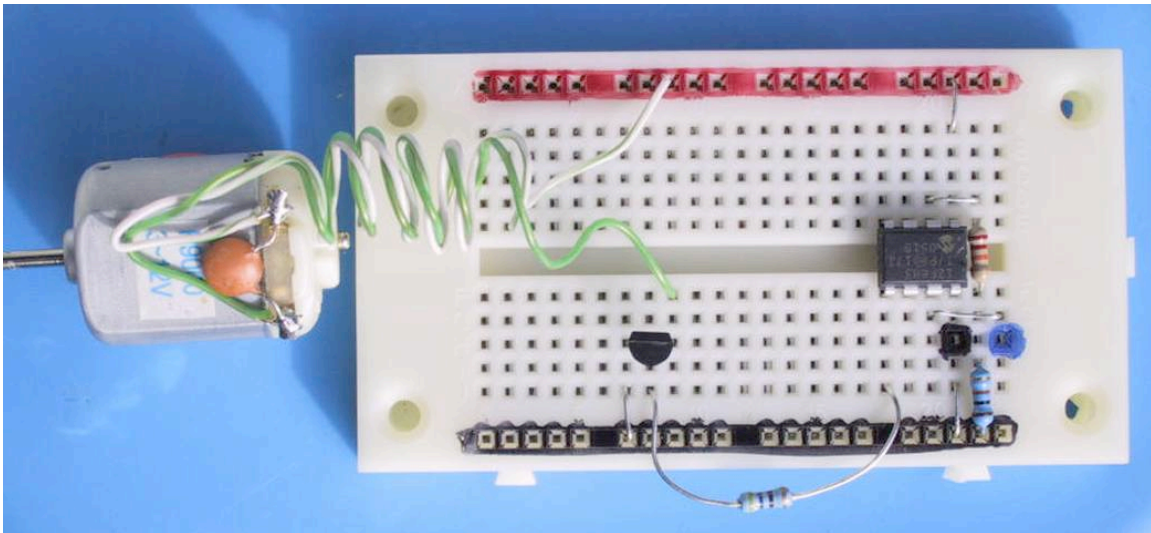


Motor Control



Loopa:
 high 2
 wait 1
 low 2
 pause 1000
 goto loopa

*'Set OP Pin 2 HIGH to turn ON the BC337
 'Wait 1 second
 'Set OP Pin 2 LOW to turn OFF the BC337
 'Pause for 1000 mS (1 second)*



- Small low current motors ("P-9000" type) can be driven directly off the same battery pack with simple ON / OFF control to make simple gearbox or robotic projects
- 'Back Emf' freewheeling diodes are not required for low power high impedance motors
- Refer to Help Section PICAXE Manual III Standard Interfacing Circuits more circuits, ideas and programming tips
- 100nF ceramic capacitor MUST be placed directly across motor brush contacts prevent sparks and spikes resetting the PICAXE chip
- LED's placed in series with the 470 Ohm base resistors are a good idea to see what is happening in the circuit
- The speed of the motor may be varied using the PWM command on any OP pin or the PWMOUT (continuous PWM) from pin 2 Refer to separate template