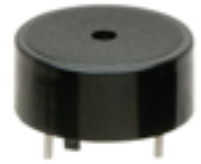


PICAXE BASICS



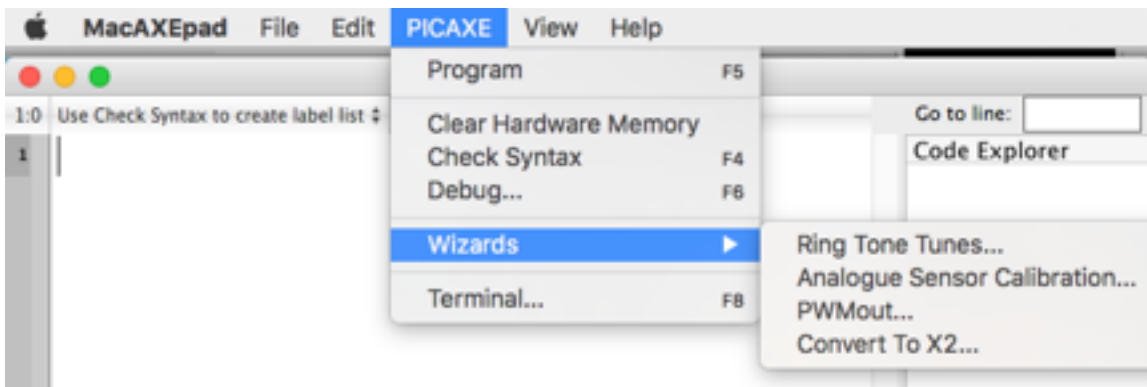
TUNE WIZARD



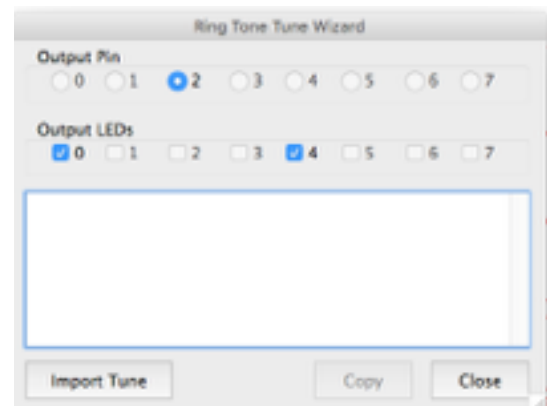
Download a tune with the Tune Wizard

1 Type the URL into a browser and save ringtones to your computer
<http://www.picaxe.com/RTTTL-Ringtones-for-Tune-Command/>

2 In your pickaxe software go PICAXE - Wizards - Ring Tone Tunes



3 Click the Output LEDs **pin 0 and 4**
The **Output Pin 2** is already chosen for the **08M2** chip



4 Click **Import Tune**, go to the saved RTTTL tunes on on your computer and open the tune you want.

5 Click **Copy** and choose **Yes** to paste into your code

